



Recovery Walk 2025 – Wolverhampton

This is a joint bid from Good Shepherd and the Service User Involvement Team (SUIT) both recipients of the Queens Awards for Voluntary Services based in Wolverhampton in the West Midlands.

The bid is strongly supported by City of Wolverhampton Council (CWC) as detailed in the attached letter and by Recovery Near You, the local treatment service for Wolverhampton.

Good Shepherd supports people experiencing homelessness, addiction, poverty, and multiple disadvantages. Over half of our staff at all levels of the organisation have lived experience and we host the Lived Experience into Action Project (LEAP) team.

SUIT is a Lived Experience Recovery Organisation (LERO) with a strong history of supporting recovery in the city. They provide a wide range of activities and support, plus a longstanding volunteering and experts by experience programme.

Partnership



A core steering group has been formed which includes Recovery Near You (RNY) and CWC's Public Health department.

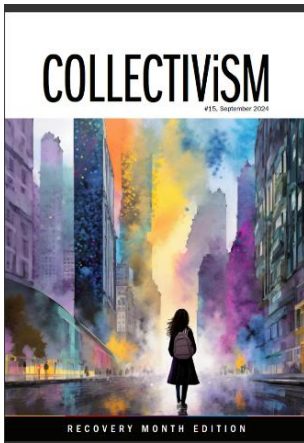
RNY is the Wolverhampton Substance Misuse Service delivered in partnership by Nacro, Aquarius and Birmingham and Solihull Mental Health Foundation Trust.



Between the organisations we have a fantastic network across Wolverhampton and the West Midlands, from statutory partners and large providers through to small community-based organisations and faith groups. We also have strong links with local business. Using this network we will bring together a steering group that includes representation from a wide variety of organisations and ensure everyone has input into the event.

We have a strong history of recovery in the city. The Good Shepherd and SUIT have collaborated on several projects and events throughout the years, most recently for a multidisciplinary art exhibition to celebrate recovery month in 2024 which featured artwork from RNY's young people's service Wolverhampton 360.

[Click to read](#)



[Click to watch](#)



The Recovery Walk

Wolverhampton is based in the West Midlands near the M6 motorway and has excellent public transport links with rail, tram and bus options available. Wolverhampton is a vibrant city located in the West Midlands, comprising 20 wards and home to over 260,000 residents. The city takes pride in its rich diversity, with residents representing a wide array of languages, cultures, and faiths from across the world.

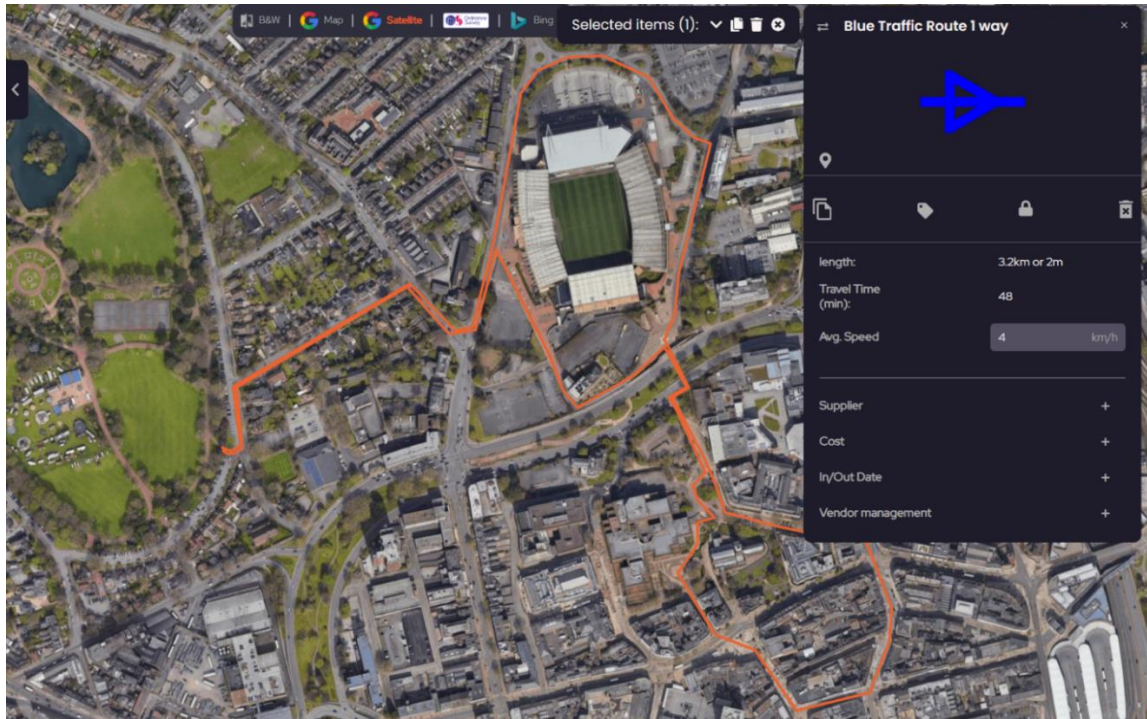
Despite its strengths, Wolverhampton faces significant public health challenges, particularly those related to substance misuse. The city experiences disproportionately higher levels of alcohol-related harm compared to both regional and national averages. Addressing these challenges is vital to improving the health and well-being of our communities.

Wolverhampton is committed to working collaboratively with partners to tackle these pressing issues who share a vision of reducing substance misuse and promoting healthier, safer communities by implementing meaningful strategies to address these challenges and drive positive change for Wolverhampton's diverse population.

We have chosen Saturday the 13th of September 2025 as the date for the walk with Saturday 20th of September booked as an alternative. The first draft of the route has been prepared (see below) and covers a total distance of 2 miles with a shorter option for people who are unable to complete the full route.

The walk starts and finishes at the Recovery Village, loops around the Molineux football stadium home of Premier League Wolverhampton Wanderers FC, then into the heart of the city centre to maximise exposure.

The walk will be adapted to take in the Chapel Ash Ring Road Underpass where a 12-month project from Asylum Artist Quarter brought together Wolverhampton City Council, Wolverhampton Art Gallery, resident artists, and 8 community groups including SUIT to regenerate a public underpass within the city into a space suitable for community events.



The Recovery Conference

The Molineux stadium has been secured as the venue for the conference. The space can comfortably accommodate 200+ guests with breakout space available. Lunch and refreshments will be provided throughout the day.

The partnership has extensive experience organising events in Wolverhampton and can contribute guest speakers to the lineup including local experts from the recovery community and professionals in Wolverhampton.

Recovery Village

West Park in Wolverhampton near the city centre has been provisionally booked for the Recovery Village. The park is 17 hectares in area (roughly 43 acres) and is considered one of the best, unspoilt examples of a Victorian park left in England. West Park is Wolverhampton's premier open space and provides a beautifully landscaped green space within a ten-minute walk of Wolverhampton city centre.

We will contract an events company with suitable expertise to project manage and deliver the Recovery Village to our agreed specification. It will have multiple areas with marquees including space for mutual aid, art and creativity, partner agencies, and a family friendly space. Wolverhampton is a diverse city and we want the event, including the music and food, to reflect and celebrate our diverse communities.

On rotation throughout the day we will have mutual aid meetings for people to attend including Narcotics Anonymous, Alcoholics Anonymous, SMART Recovery, and we will reach out to mutual aid groups for families including Families Anonymous and AI Anon.

Wolverhampton has some fantastic services, organisations and community groups and we want to showcase what's great about the city. There will be space available for partners and the community, and we will coproduce what this looks like with the wider steering group.

The Recovery Village will include a specific space for family friendly activities, but families will be considered in all aspects of the planning.

Art and creativity is a huge part of the recovery community in Wolverhampton and we will provide a dedicated space at the Recovery Village. This will include recovery led drama performances, spoken word, artwork, live workshops with artists, and collaborative art that people who attend the village can contribute to.

Budget

A draft budget has been prepared using quotes from a traffic management company that the local authority has previously used, and a local events company to give estimated costs for the walk and recovery village.

If successful we will get three quotes from different companies in line with our procurement policy and use in kind support from local organisations and businesses to reduce costs where possible.

Item	Cost	Notes
Conference	£4,750	In discussions with Levy the catering provider for Wolverhampton Wanderers FC to host and run the conference and deliver at cost price saving over £2,000.
Walk	£9,500	Planned walk includes existing safety management features to reduce cost.
Recovery Village	£29,000	Cost includes all aspects including stage, performers, equipment, and facilities.
Promotion	£2,500	We will use existing contacts with local and regional media to promote and work with FAVOR to secure national media coverage.
Contingency / Misc	£4,575	10% contingency.
Total	£50,325	

Websites/Links

[Good Shepherd](#)

[SUIT](#)

[RNY](#)

[West Park](#)